



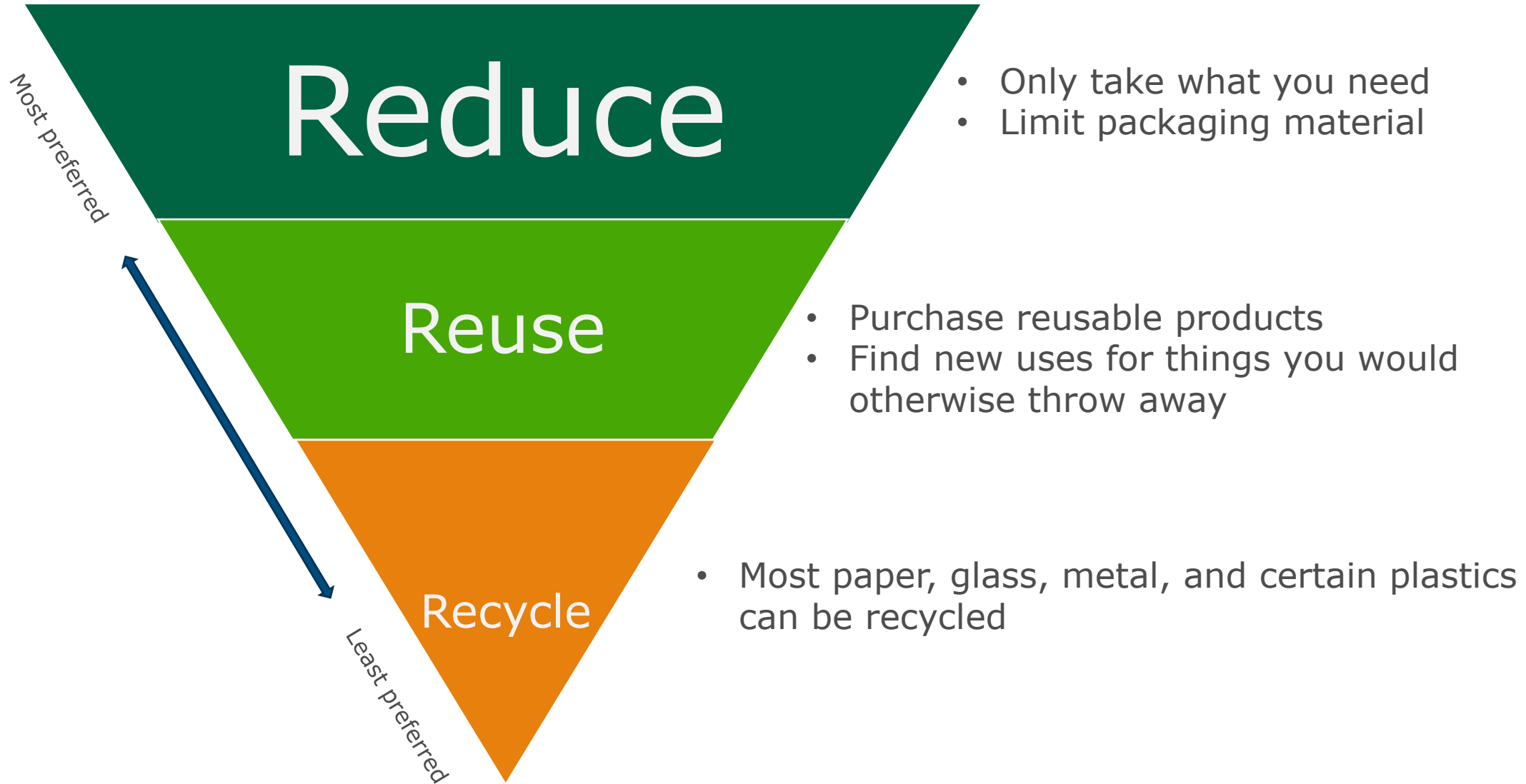
Recycle Right Today

Presented by Republic Services and Oregon State University

Which of these items are recyclable?



Waste Reduction Hierarchy



Waste Reduction Examples



USE A REUSABLE LUNCHBOX
OR WATER BOTTLE



DONATE AND PURCHASE
REUSABLE/DURABLE ITEMS



REPAIR ITEMS YOU ALREADY
OWN

Let's Define Recycling

- *A series of activities that includes collecting recyclable materials that would otherwise be considered waste, sorting and processing recyclables into raw materials such as fibers, and manufacturing the raw materials into new products.*

Paper Products that Can Go in the Tan Cart



Newspaper, inserts
magazines, catalogs,
phonebooks



Ads, envelopes,
mixed paper



Paperback books
(or donate them)



Non-foil wrapping
paper



Corrugated Cardboard
(3'x3'x3' or smaller: flattened)



Cereal, dry food boxes
(remove liners)

Plastic and Metal Products that Can Go in the Tan Cart



Plastic Bottles
(no lids)



Plastic Jugs



#5 plastic tubs
(no lids)



Pill bottles
(non-prescription)



Empty, clean, dry aluminum
tins and metal cans

These Never Go in the Tan Cart



Food-soiled, frozen food boxes, wax/plastic coated cardboard



Dirty or shredded paper, facial tissues



Ribbon and foil wrapping paper



Oil, paint containers and aerosol spray cans



Empty motor oil and antifreeze containers



Plastic plates and utensils



Caps and lids



Candy wrappers and chip bags

These Never Go in the Tan Cart



Plastic shopping and
garbage bags
(**NEVER** bag your
recyclables)



Diapers



Polystyrene foam, takeout
containers, clamshells,
coffee/to-go cups

Where does your recycling go?

Commingled recycling is sent to Source Recycling in Albany where it is baled for transport



Processing at the Material Recovery Facility

- After commingled material is baled, it is transported to a MRF, or materials recovery facility, to be sorted.
- At the MRF, commodities are sorted into like materials.
- In this system, only those materials that are accepted by the MRF will be recycled.



The MRF – Processing

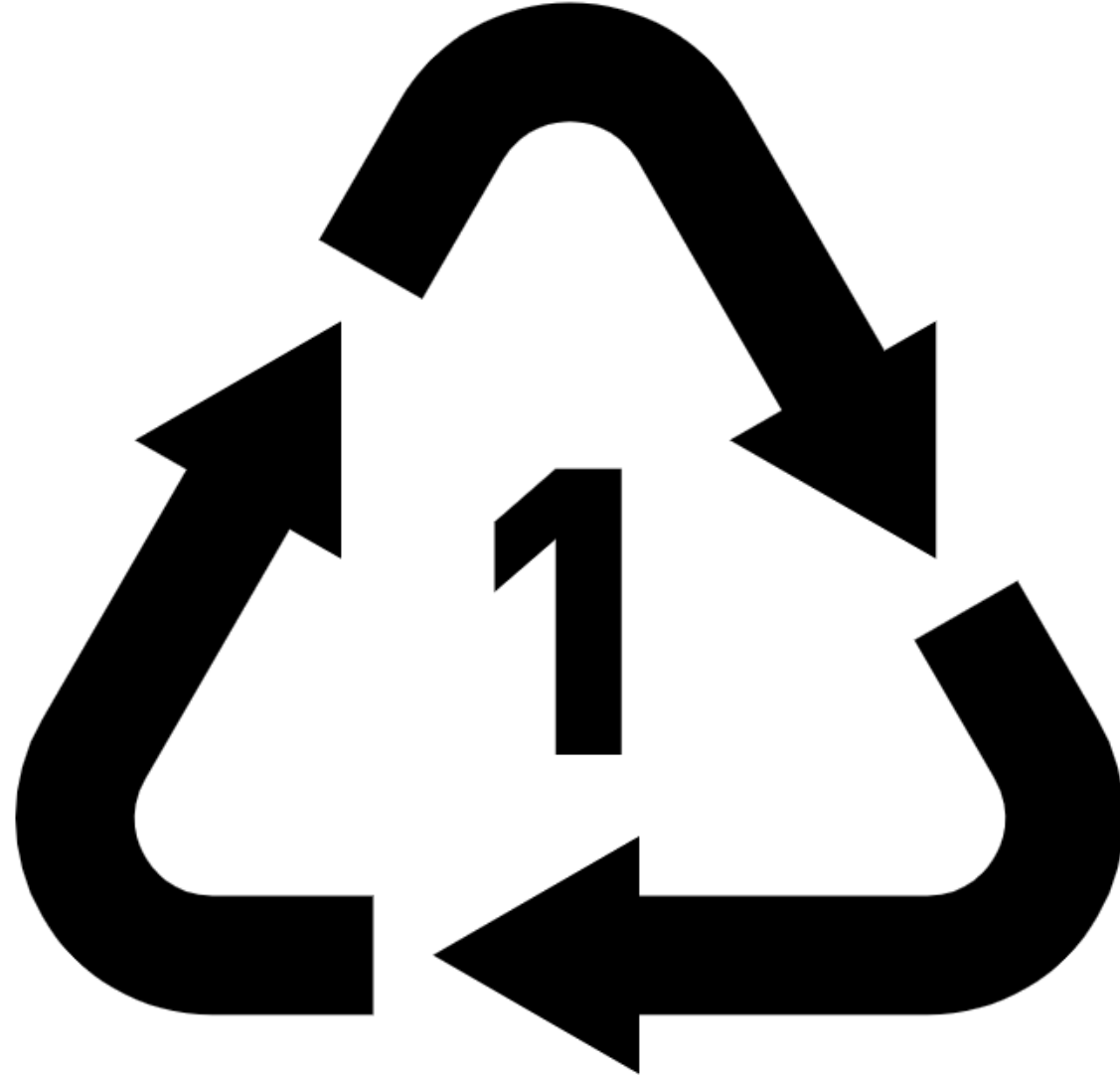
- Materials are loaded onto a conveyor belt and are sorted (contamination makes it tough)
- Some sorting is automated, with powerful magnets, series of screens and fans. This is not always the case. Some facilities, only have “pick lines”.
- The rest of the sorting is done by hand.
- Once material is separated into like commodities, it is baled for sale to manufacturers



Chasing Arrows



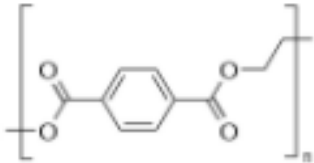
Chasing Arrows



Chasing Arrows



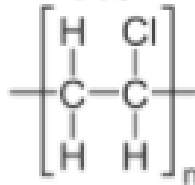
PETE



Polyester:
Thin clear bottles
Textiles
3D printing filament



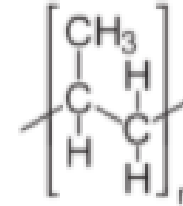
PVC



Polyvinyl Chloride:
PVC pipe
PVC-insulated wire
Vinyl siding & windows
(CPVC has more Cl.)



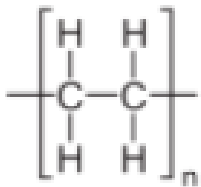
PP



Polypropylene:
Storage tubs
Outdoorwear
EPP foam



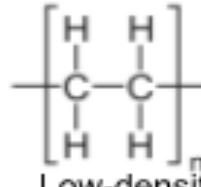
HDPE



High-density
polyethylene:
Milk jugs
Cutting boards



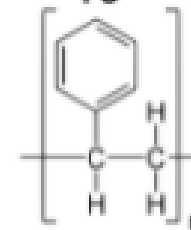
LDPE



Low-density
polyethylene:
Ziplock bags
(Branched chains)



PS



Polystyrene:
Plastic spoons
EPS Foam

Recycling is Regional

- What is recyclable depends on demand for raw material and MRFs ability to process/sort it.
- What is recyclable here is different than in other regions.
- While things might be technically recyclable in a lab, some items are not able to be recycled at scale in a way that offsets the environmental or financial cost.

Plastic Pollution and Recycling Modernization Act

- Holds packaging manufacturers responsible for mitigating the environmental cost of their packaging
- Creates a statewide list for what is and isn't recyclable
- Establishes a Truth-in-Labeling taskforce to study and make recommendations regarding deceptive marketing practices around recycling.

Master Recycling Certification

- Gain deeper understanding of waste management
- Become a true expert in waste prevention and recycling
- Become a trusted resource in the community for waste reduction and recycling
- Meet people who are as dedicated to keeping our community clean

Summary

- Waste reduction is better than recycling
- Items in your recycling cart should be Empty, Clean and Dry
- 'Know what to throw' and 'When in doubt, throw it out!'
- Recycling is changing in 2025 due to the Plastic Pollution and Recycling Modernization Act.

Questions?

klarson4@republicservices.com